

MINI PROJECT 5

DO WHAT YOU LOVE

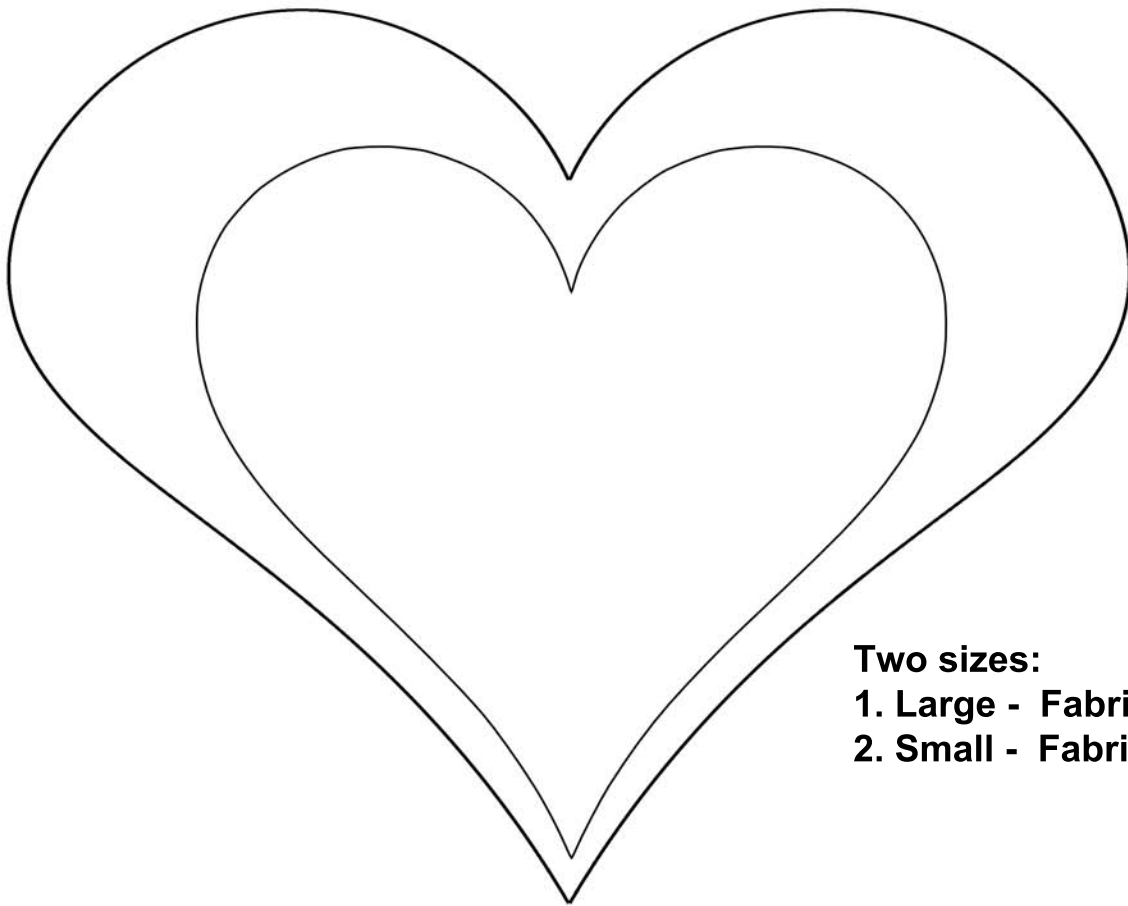
Blackwork Journey – Designs by Elizabeth Almond



*Create a blackwork heart using simple stitches
for someone special in your life!*

www.blackworkjourney.co.uk

Do what you love!



Two sizes:

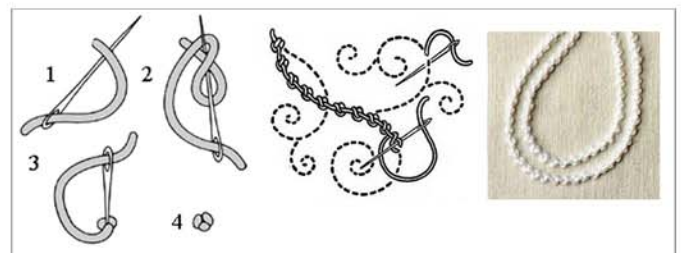
1. Large - Fabric 8 x 8 inches
2. Small - Fabric 6 x 6 inches

This is the basic heart outline which can be used for a blackwork counted thread design, an embroidery or a pulled thread work piece.

Method:

1. First trace the heart onto your chosen fabric using a water-soluble pen or an HB pencil.
2. Work the outline of the heart first using either double knot stitch (3 strands of floss) for a textured edging, back stitch whipped (Two strands of floss whipped with two strands) or, stem stitch (three strands). The outline would be worked first whatever the technique chosen.

Many other stitches could be used for outlines but these are simple to work and follow the curve. If the outline is being worked on evenweave follow the line of the heart not the threads.

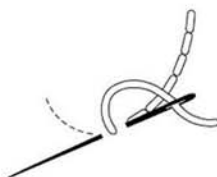


Double knot stitch - creates a textured edging

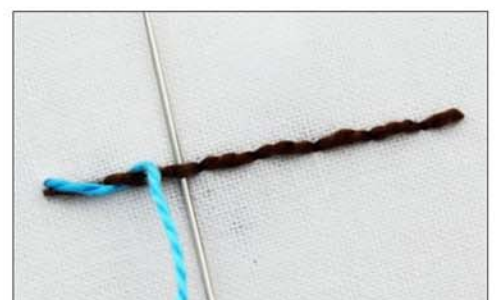


Stem stitch

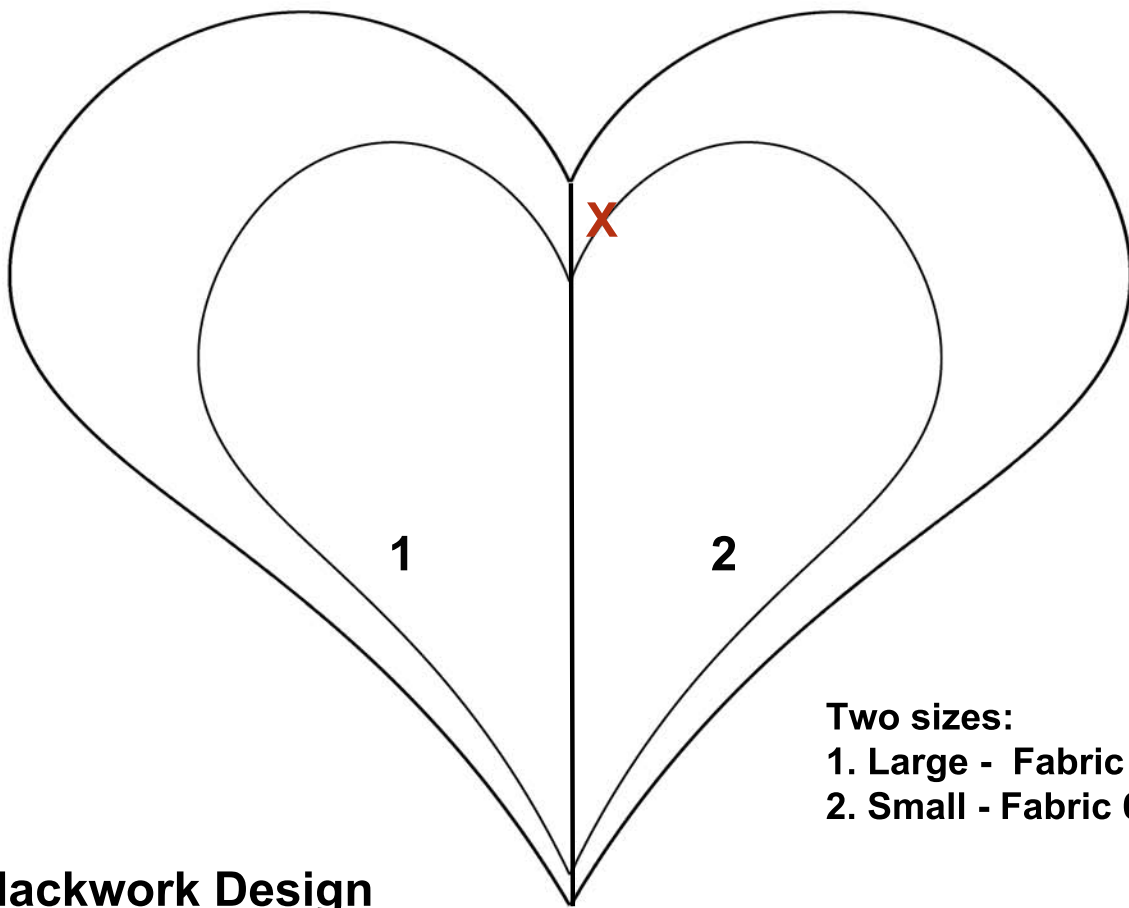
Back stitch



Whip the back stitch using the heel of the needle



Do what you love!



Two sizes:

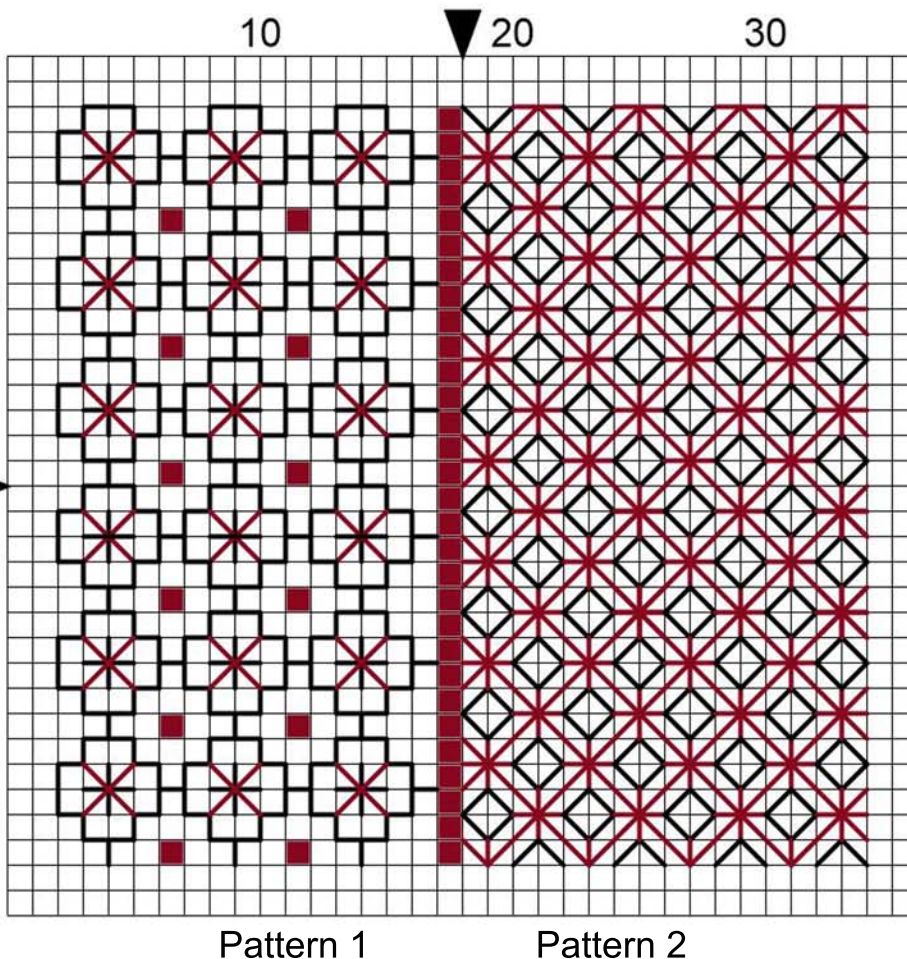
1. Large - Fabric 8 x 8 inches

2. Small - Fabric 6 x 6 inches

Blackwork Design

Fabric: Zweigart 28 count evenweave or, 14 count Aida, 8 x 8 inches

Embroidery floss, Colours of choice, one skein of each



Stitches:

Cross stitch - 2 strands

Fillers - 1 strand

Outline - double knot, 3 strands

Method:

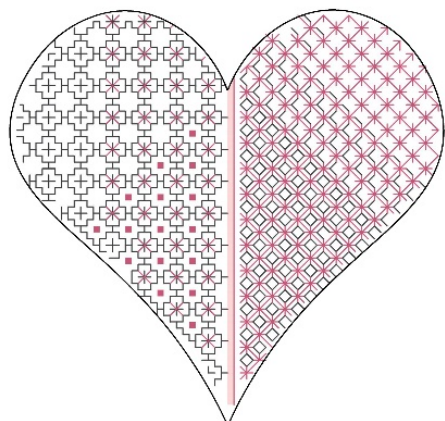
Draw the outline. Stitch the outline in double knot stitch.

Work the centre line of cross stitch. Add the filler patterns using one strand of floss.

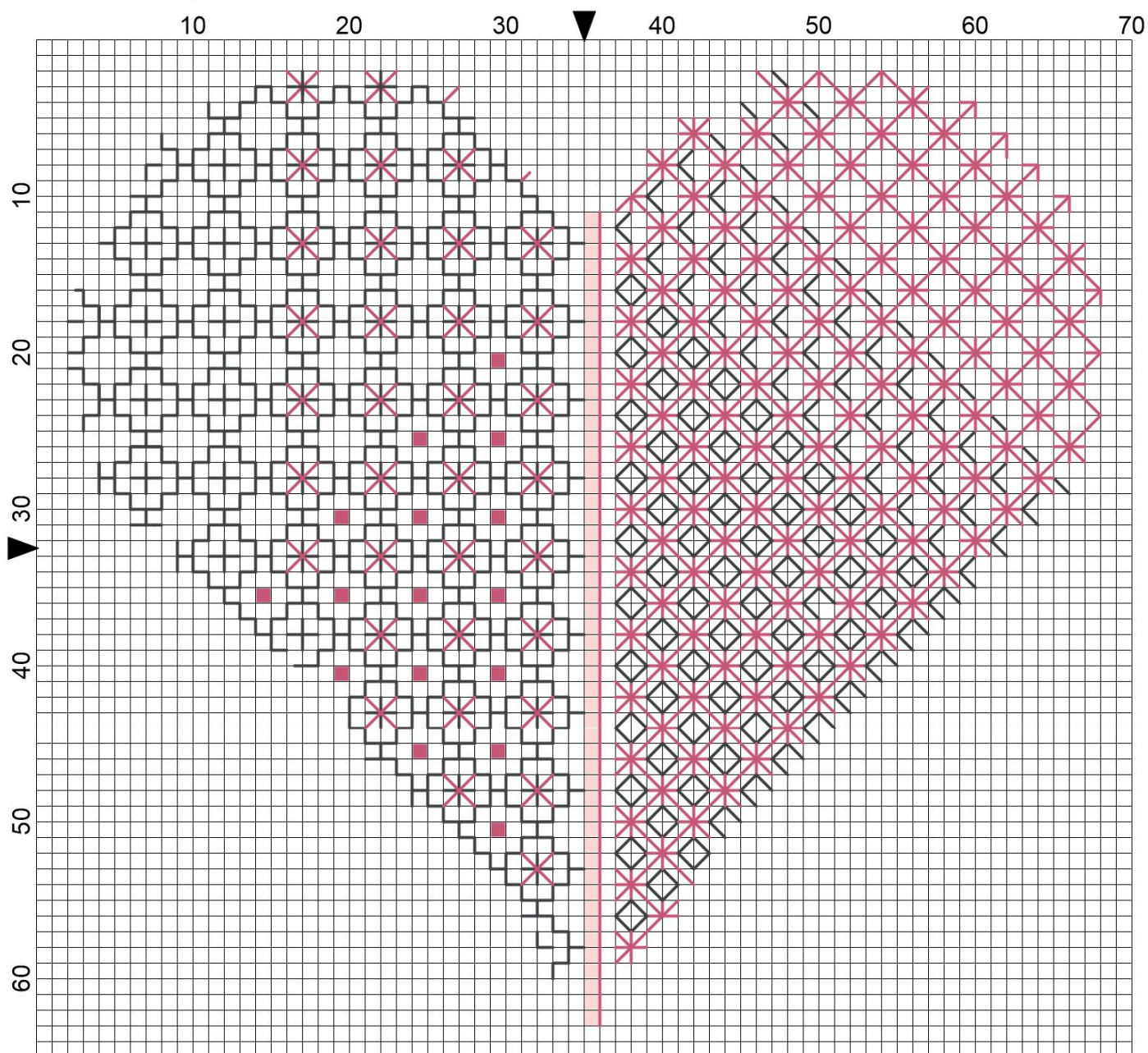
Place the finished embroidery face down on a soft towel and press lightly.

Add an embellishment at the X.

Enjoy!



The design can be worked from the chart and the outline added afterwards or, it can be sketched first and then filled in. This is the easiest way of working the design. However, I have added a chart showing how the different sections can be shaded by adding and removing stitches.



Post pictures of your finished embroidery to the Facebook group but most of all stay safe and enjoy your embroidery.

If you have any queries please contact: lizalmond@blackworkjourney.co.uk

Liz